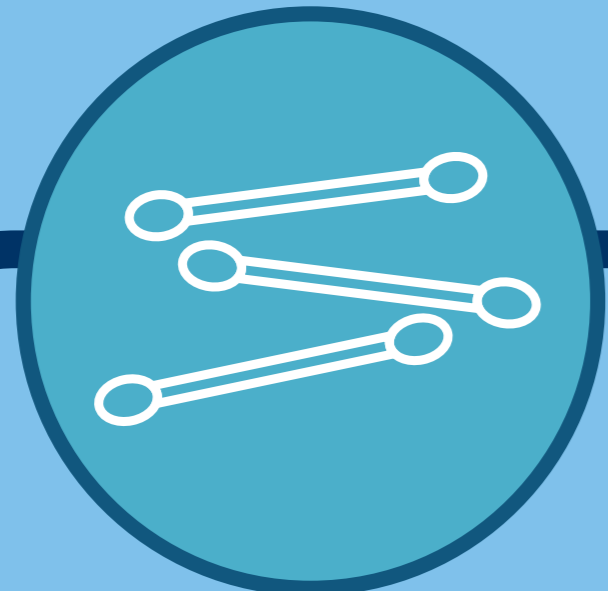


# THINK BEFORE YOU Flush!



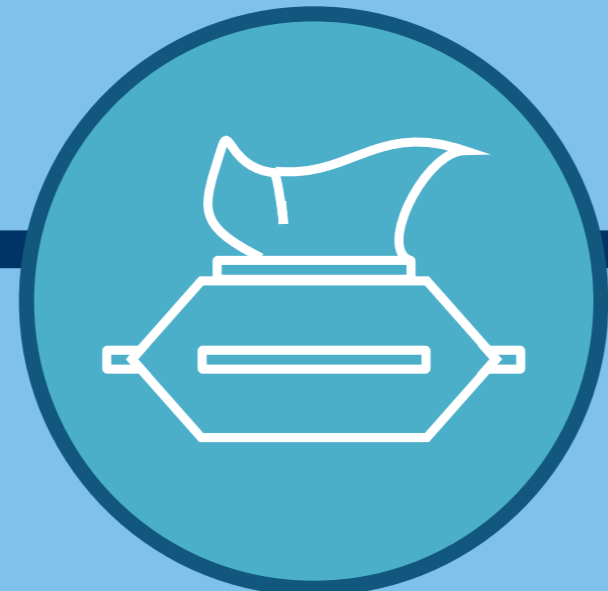
DO NOT FLUSH THE FOLLOWING ITEMS DOWN THE TOILET



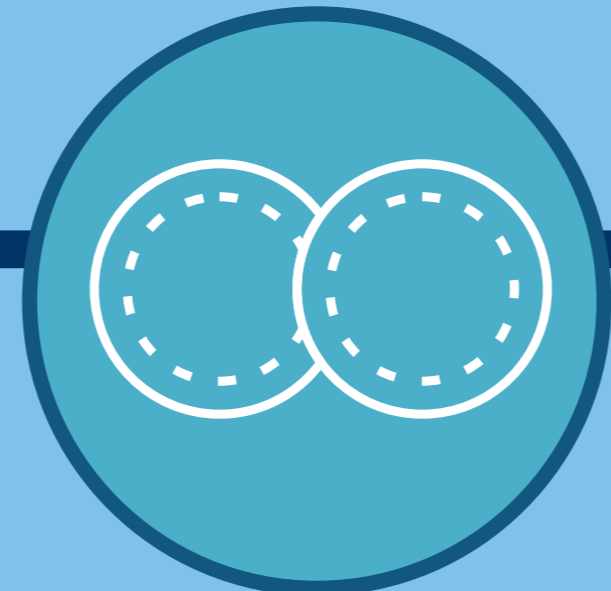
COTTON BUDS



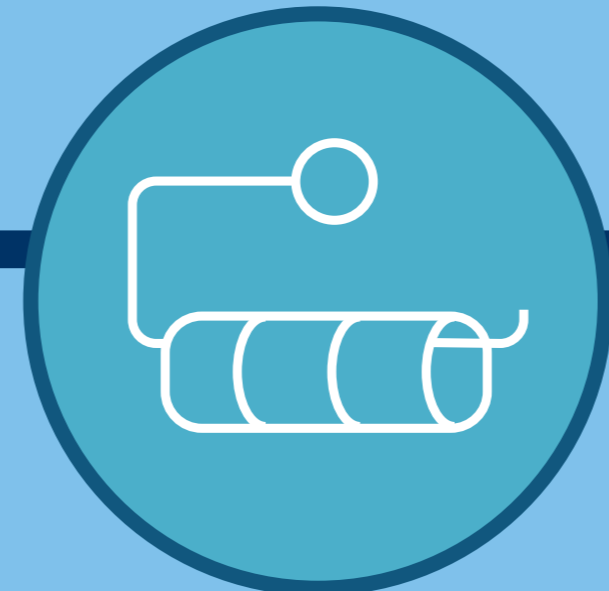
WET WIPES



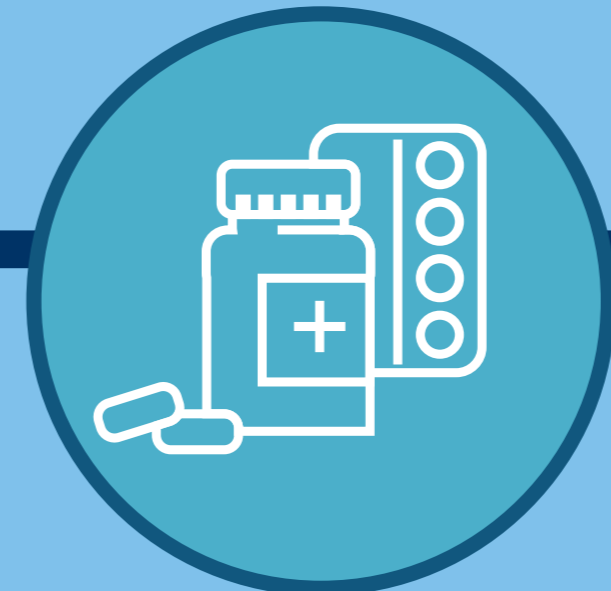
FACIAL WIPES



CLEANSING PADS



TOILET ROLL TUBE



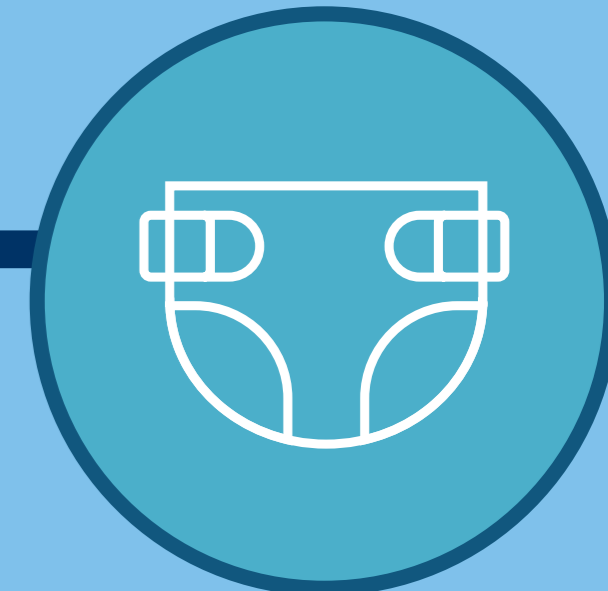
MEDICINES



CIGARETTES



PLASTERS



NAPPIES



The sea starts here...

HELP KEEP  
OUR OCEAN  
CLEAN!



Waste water  
treatment plant



Smaller items that are flushed, such as cotton buds, can escape through treatment filters at the treatment plant & reach our rivers & beaches

Sewage related litter causes harm to the environment and can pollute our water supply and coastlines

WORKING TOGETHER, WE CAN ENSURE EFFECTIVE MAINTENANCE & SAVING COST

- Wipe & scrap plates, pans & utensils before washing
- Collect waste oil in a suitable container
- Maintain your sewer & water pipes inside your yard
- Use strainers in sink plug holes
- Pour washing/laundry water into toilet sink or basin
- Don't put oil, fat or grease down the drain
- Don't throw objects into manholes, it causes blockages & sewer spillage
- Don't sweep any waste into floor drains
- Don't pour washing/laundry water into storm water drains. It causes smells & health hazards
- Don't connect sewer pipe into storm water pipe. It causes health hazards

2 out of 3  
all drain blockages  
contain sanitary waste

24 HOUR EMERGENCY CONTROL ROOM

028 313 8111 / 028 313 8137

[www.overstrand.gov.za](http://www.overstrand.gov.za) | [enquiries@overstrand.gov.za](mailto:enquiries@overstrand.gov.za)



We belong



We care



We serve

